



# MONTHLY MEMBERSHIP PROGRESS REPORT

District 322C1

Results as of: 06/30/2019

GMT: SWADESH RANJAN SAHA

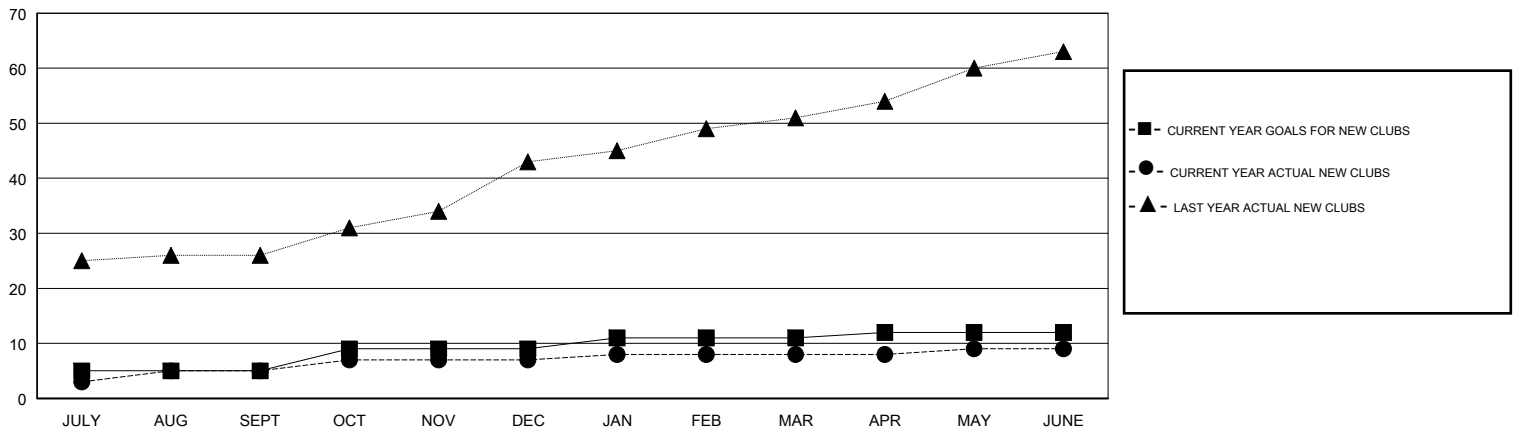
LOCATION INDIA

GMT CA

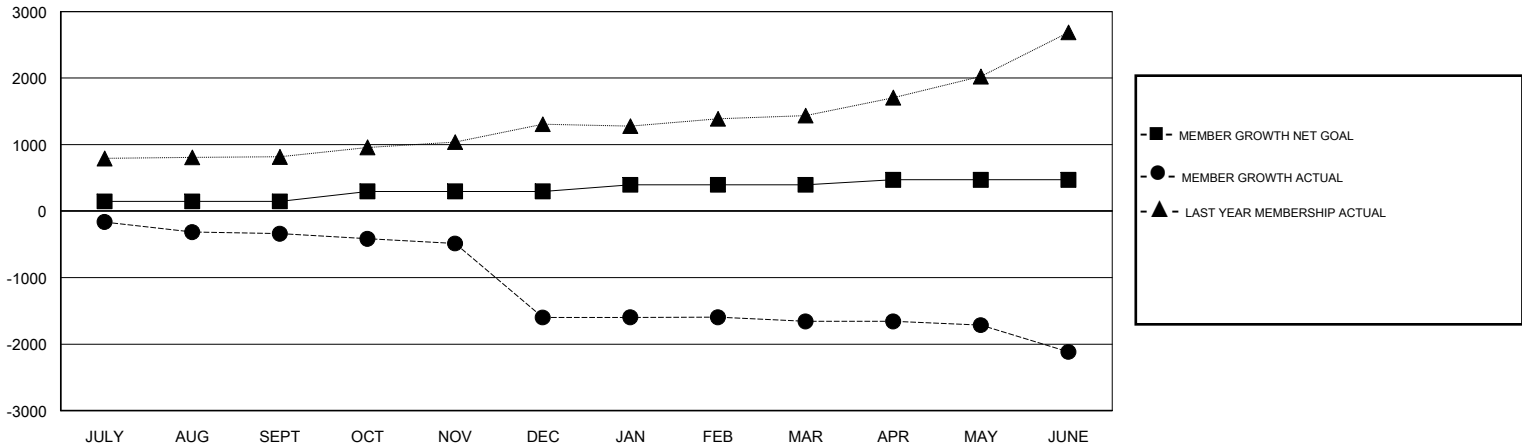
Clubs			
RESULTS FOR 2018-2019			
QUARTER	NEW CLUB GOAL	NEW CLUBS	DROPPED CLUBS
JULY/AUG/SEPT	5	5	3
OCT/NOV/DEC	4	2	24
JAN/FEB/MAR	2	1	4
APR/MAY/JUNE	1	1	11

Members			
RESULTS FOR 2018-2019			
QUARTER	MEMBER GROWTH NET GOAL	MEMBER GROWTH ACTUAL	DROPPED MEMBERS ACTUAL (including transfers)
JULY/AUG/SEPT	145	172	494
OCT/NOV/DEC	150	106	1,355
JAN/FEB/MAR	100	62	105
APR/MAY/JUNE	75	325	598

GOALS AND ACTUAL NEW CLUBS CUMULATIVE



GOALS AND ACTUAL MEMBERS CUMULATIVE



DROPPED CLUBS: 42

67 CLUBS OF 172 ADDED 1 OR MORE NEW MEMBERS

GENDER DISTRIBUTION

MALE 3,021 (76.50%)  
 FEMALE 928 (23.50%)  
 Women Percentage Fiscal Year Goal: 28%

DROPPED MEMBERS

[CLICK HERE FOR CUMULATIVE MEMBERSHIP DATA](#)

DECEASED	16
CLUB CANCELLED	1,330
OTHER	1,206
<b>TOTAL</b>	<b>2,552</b>

TOTAL FAMILY UNIT MEMBERS	1,888
FAMILY MEMBERS PAYING HALF DUES	1,097